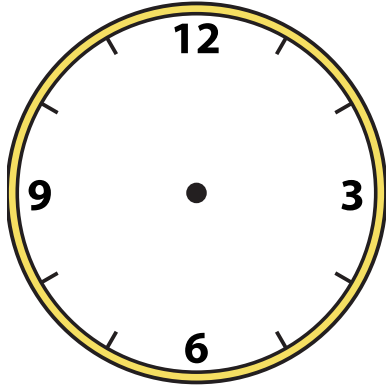
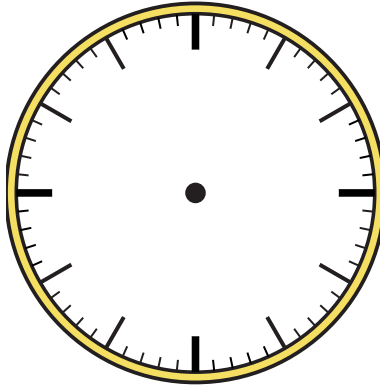


Draw the hour and minute hand on the clock so it represents the time shown.

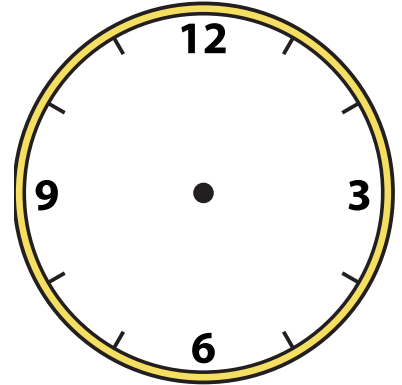
1) 12:30



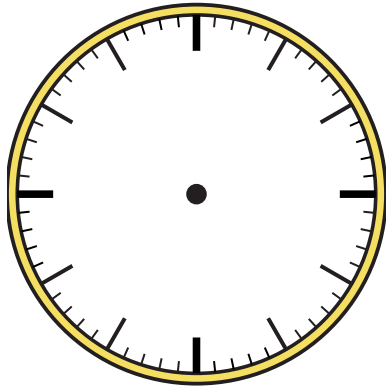
2) 1:15



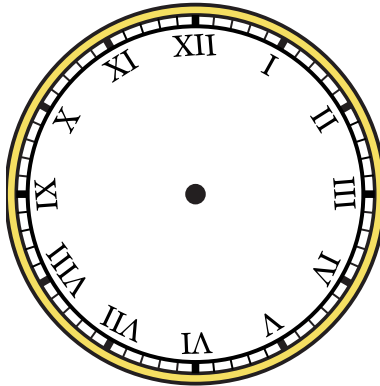
3) 2:30



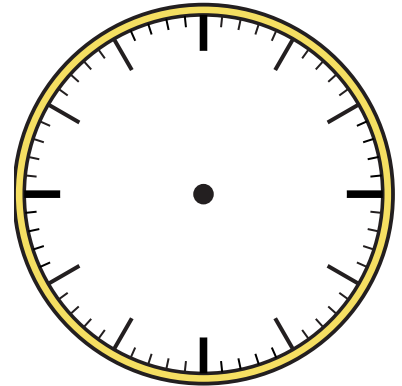
4) 4:40



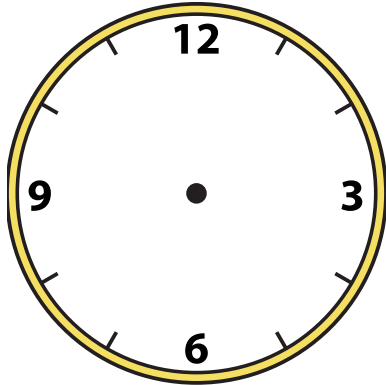
5) 9:25



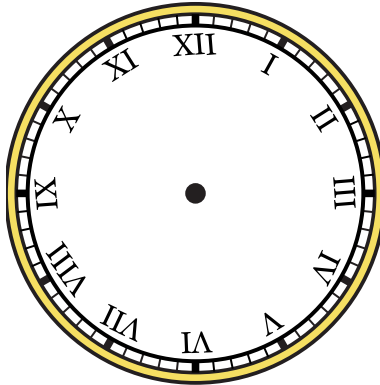
6) 7:45



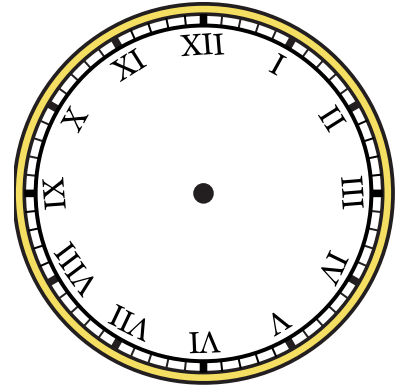
7) 1:20

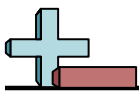


8) 3:40



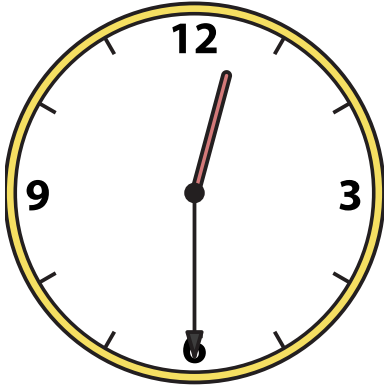
9) 7:50



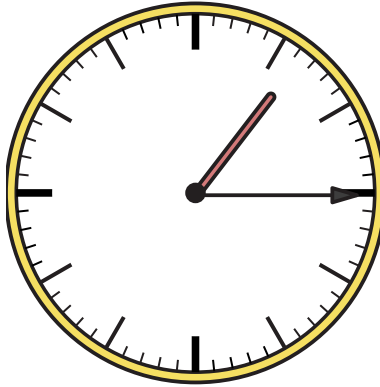


Draw the hour and minute hand on the clock so it represents the time shown.

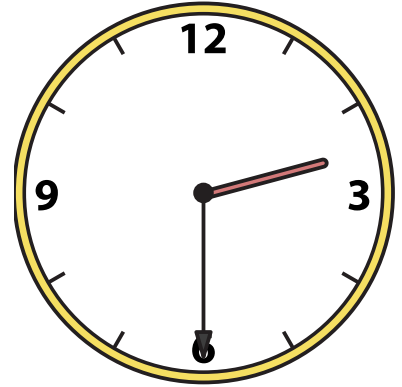
1) 12:30



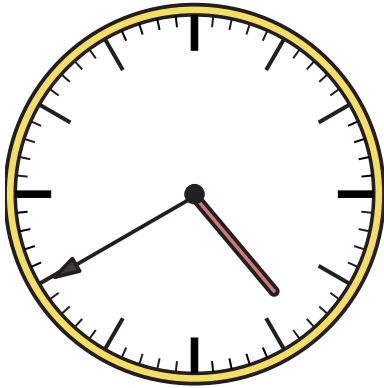
2) 1:15



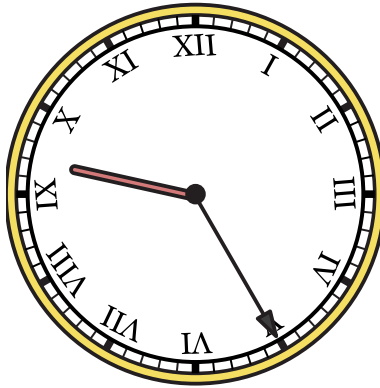
3) 2:30



4) 4:40



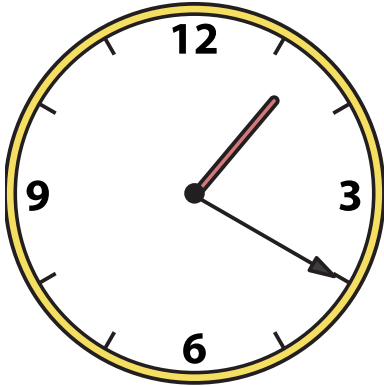
5) 9:25



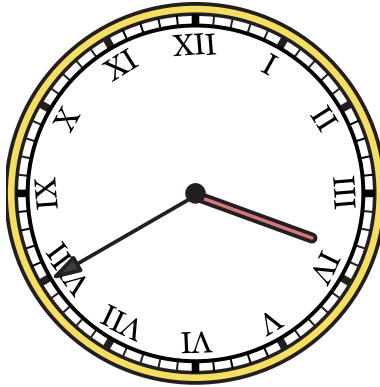
6) 7:45



7) 1:20



8) 3:40



9) 7:50

